



THE OHIO STATE UNIVERSITY

The Data Management Lifecycle

Amanda Rinehart, Data Management Services Librarian
University Libraries



Research Data

“Units of information observed, collected, or created in the course of research”

Erway, Ricky. 2013. Starting the Conversation: University-wide Research Data Management Policy. Dublin, Ohio: OCLC Research.
<http://www.oclc.org/content/dam/research/publications/library/2013/2013-08.pdf>.



Data Lifecycle

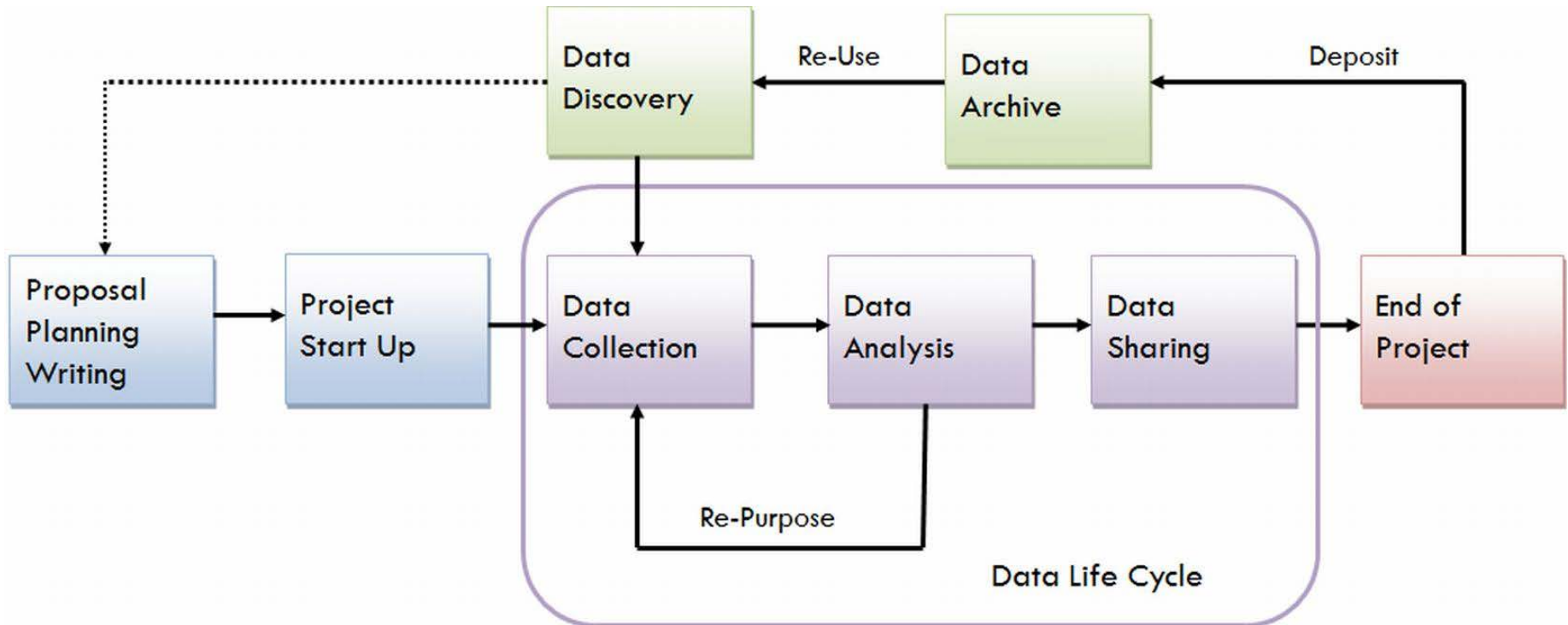


Image courtesy of the University of [Virginia Library Research Data Services](#)



Federal Sharing Policies





Funder	New policies start:	DMP required?	When do I share?
AHRQ	Oct 2015	yes	At article publication
ASPR	Oct 2015	proposed	Within 30 mo. of collection
CDC	Oct 2015	yes	At article publication/or within 30 mo. of collection
DOD	Estimate FY2015	yes	Within reasonable timeframe
DOE	Oct 2014/ Oct 2015	yes	At article publication
FDA	Oct 2015	proposed	At article publication
IES	FY2013/FY2015	yes	At article publication
NASA	Oct 2015	yes	At article publication
NIH	Dec 2015	< \$500,000	At article publication
NIST	Oct. 2015	yes	No later than 12 months from publication of article
NSF	Jan 2016	yes	Currently exploring
USAID	October 2014	no	At article publication/ within 12 months and to the Development Data Library (DDL)
USGS	Feb 19, 2015	recommended	No information yet



Data Management Plan

Data types and formats

Storage, backup and security

Metadata

Sharing and re-use

Archiving and preservation

Legal and ethical considerations



Data Lifecycle

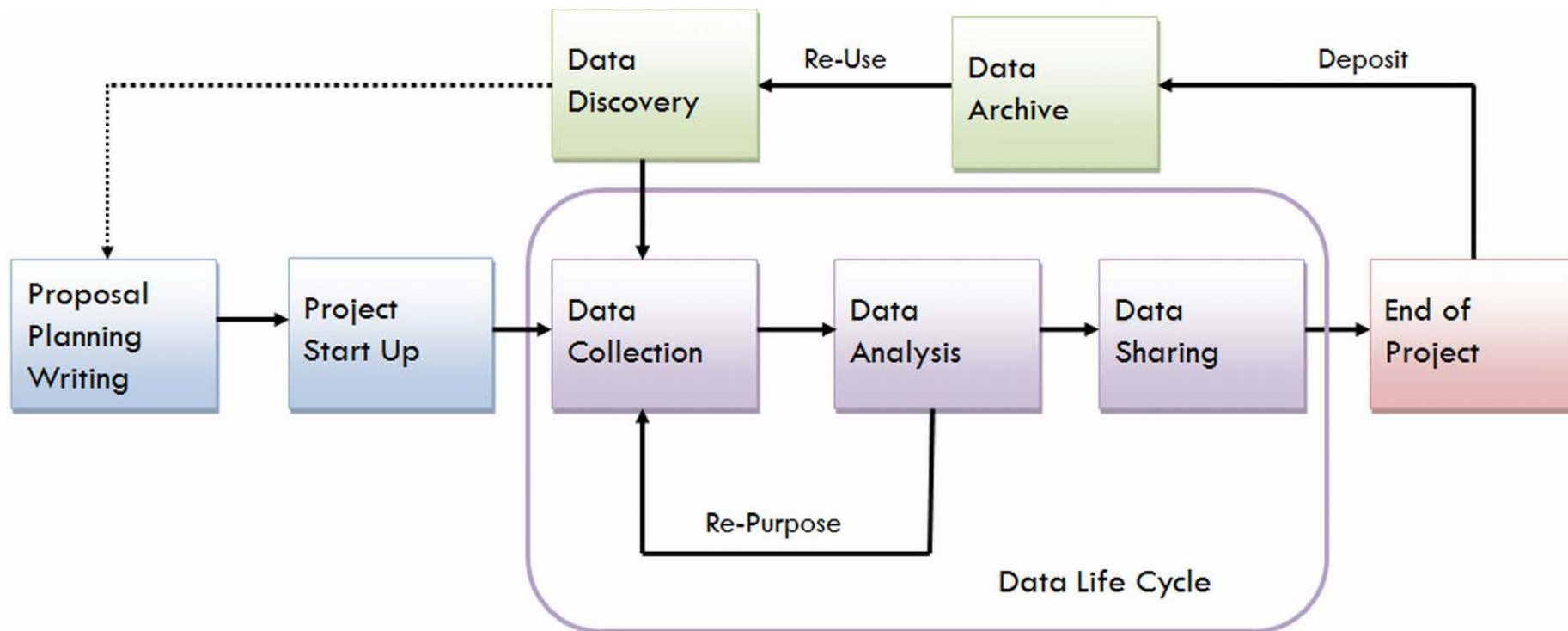


Image courtesy of the University of [Virginia Library Research Data Services](#)



Data Lifecycle

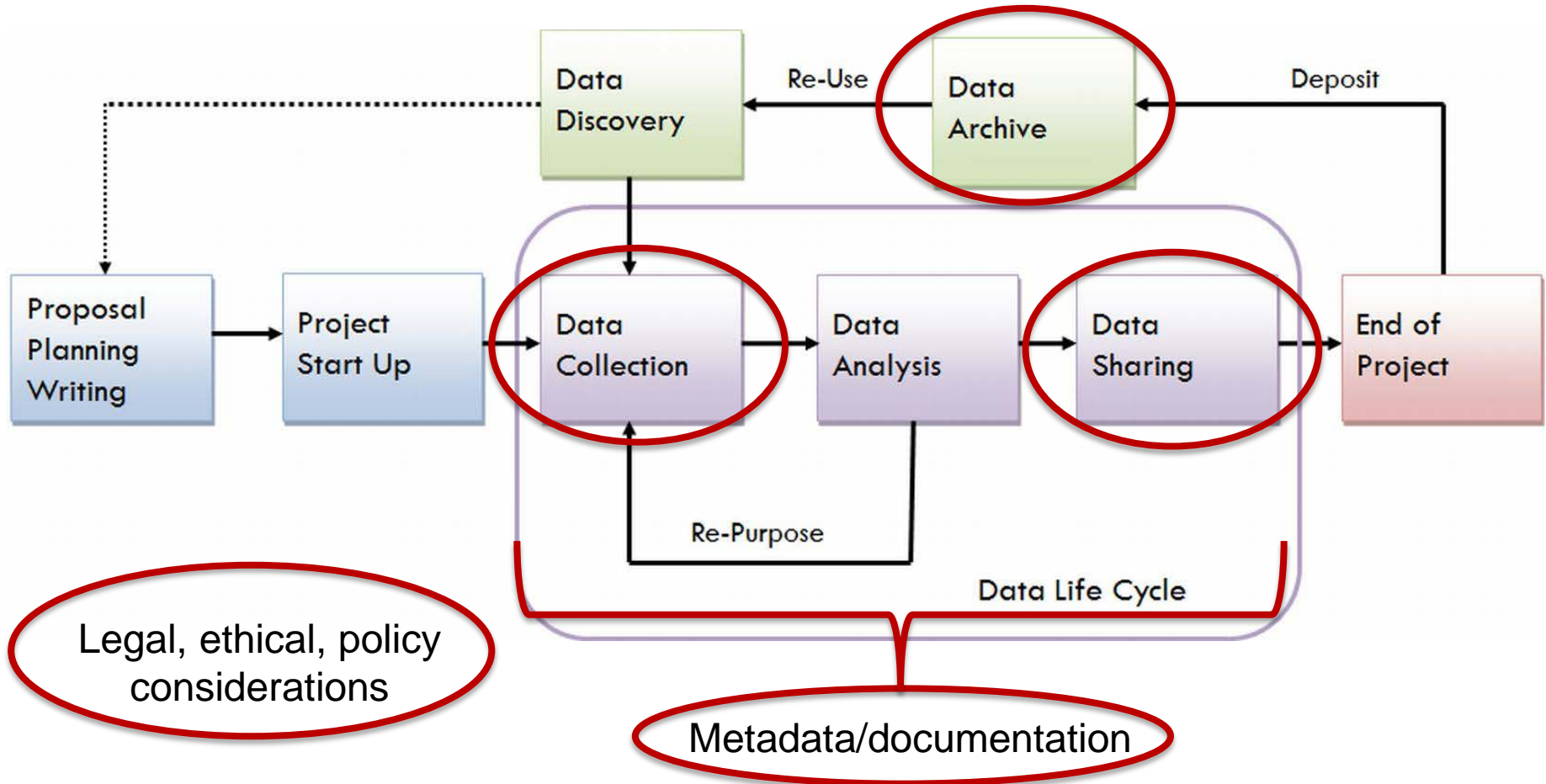


Image courtesy of the University of Virginia Library Research Data Services



DMPTool.org

Welcome! Amanda Rinehart

Home | My Dashboard | DMP Requirements | Public DMPs | News | Help | Contact Us | About ▾ Log Out

The Ohio State University Contact Amanda Rinehart

My Dashboard | My DMPs | **Create New DMP** | Review DMPs | DMP Templates | Institution Profile | My Profile

DMP Overview → DMP Details → DMP Preview →

Plan was successfully created. ×

DMP DETAILS

Department of Energy: DOE

Click on a section below to edit it at any time.

- = Complete
- * = Mandatory

Template Outline

- Data types and sources**
- Content and format
- Sharing and preservation
- Protection

Instructions | **Links**

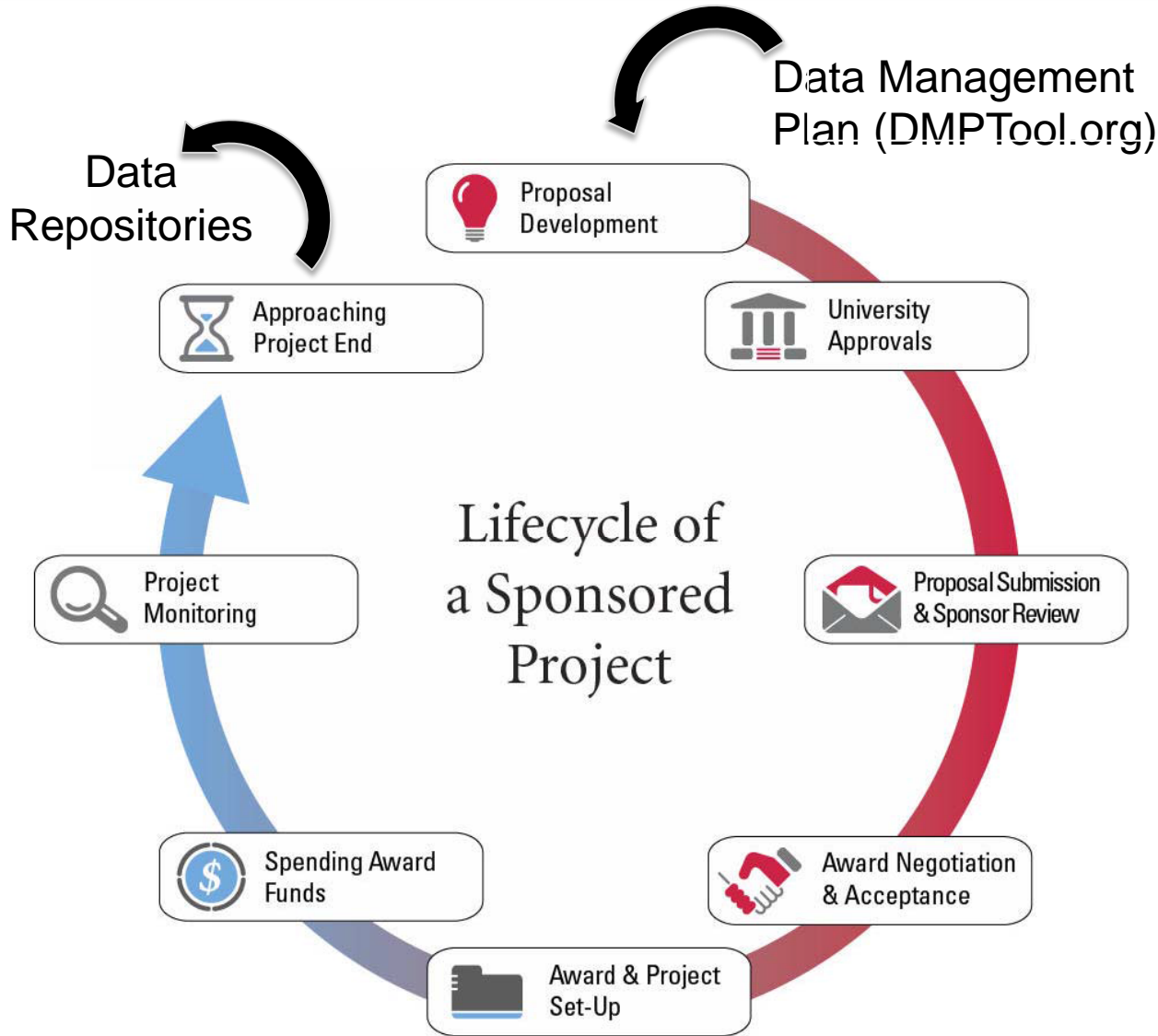
A brief, high-level description of the data to be generated or used through the course of the proposed research and which of these are considered digital research data necessary to validate the research findings.

Guidance box size: [small](#) | [medium](#) | [full](#)

DMPs should provide a plan for making all research data displayed in publications resulting from the proposed research open, machine-readable, and digitally accessible to the public at the time of publication. This includes data that are displayed in charts, figures, images, etc. In addition, the



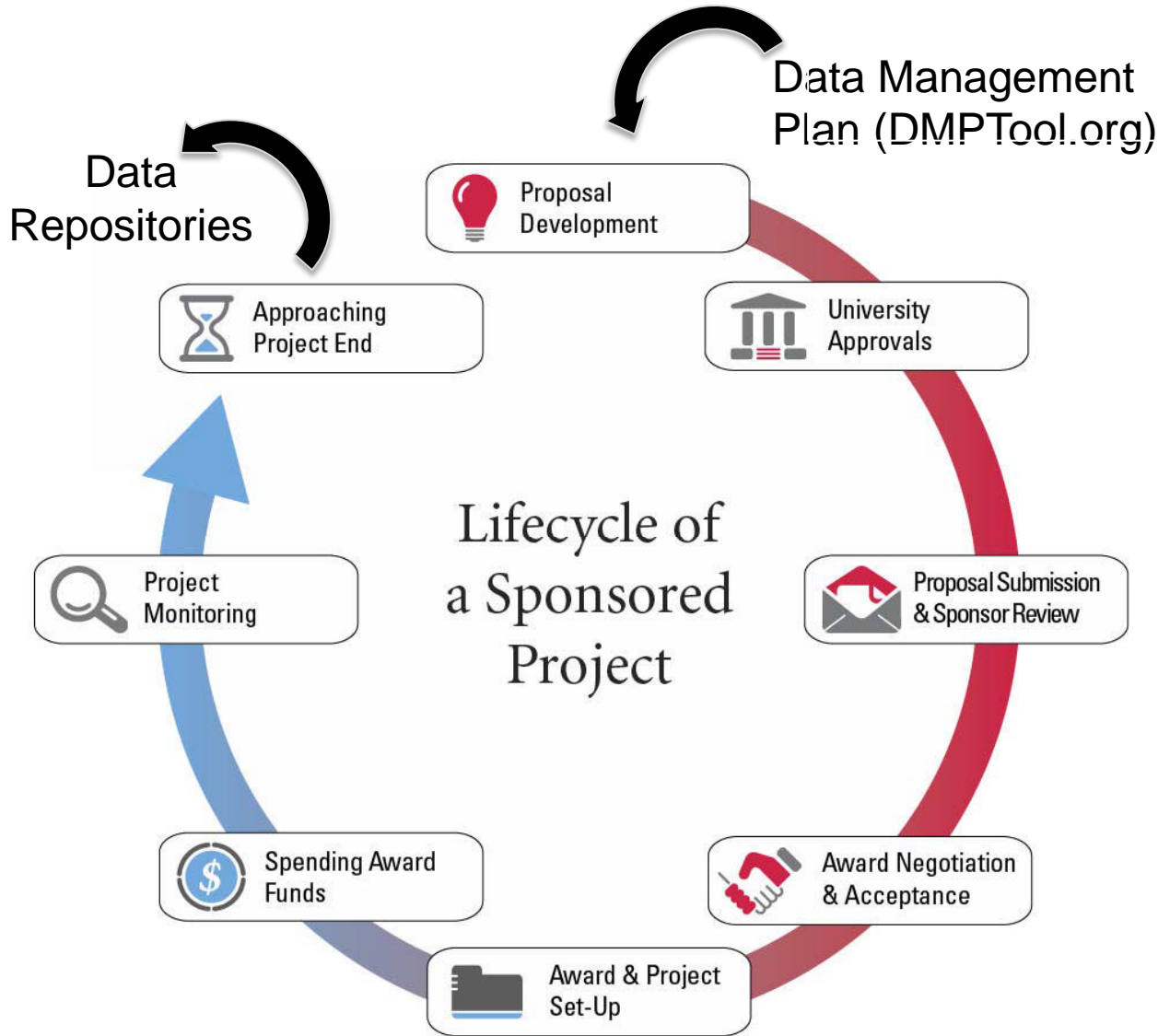
Funding Lifecycle







Funding Lifecycle





Data Lifecycle

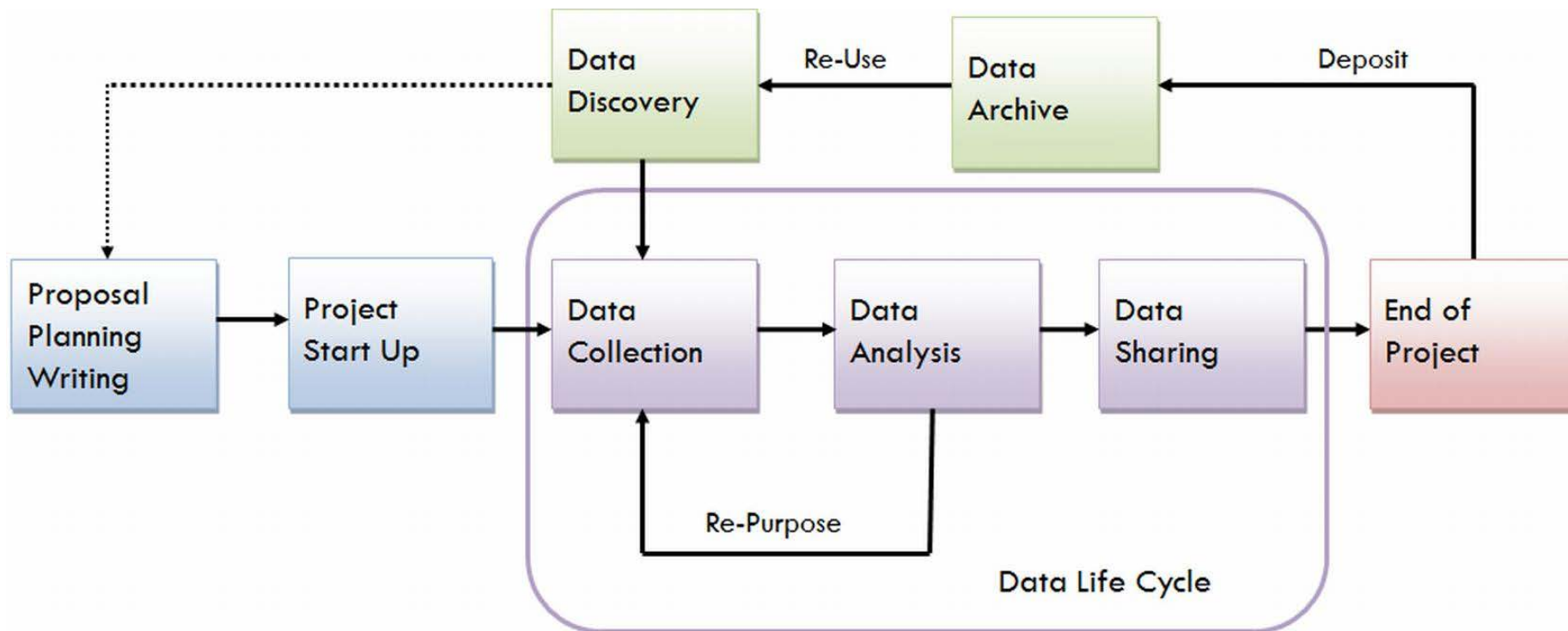


Image courtesy of the University of [Virginia Library Research Data Services](#)



Funder	New policies start:	DMP required?	When do I share?
AHRQ	Oct 2015	yes	At article publication
ASPR	Oct 2015	proposed	Within 30 mo. of collection
CDC	Oct 2015	yes	At article publication/or within 30 mo. of collection
DOD	Estimate FY2015	yes	Within reasonable timeframe
DOE	Oct 2014/ Oct 2015	yes	At article publication
FDA	Oct 2015	proposed	At article publication
IES	FY2013/FY2015	yes	At article publication
NASA	Oct 2015	yes	At article publication
NIH	Dec 2015	< \$500,000	At article publication
NIST	Oct. 2015	yes	No later than 12 months from publication of article
NSF	Jan 2016	yes	Currently exploring
USAID	October 2014	no	At article publication/ within 12 months; in the Development Data Library (DDL)
USGS	Feb 19, 2015	recommended	No information yet



Storage \neq Archive/Preservation

Sharing/Access



Reputable Repository



Data Repositories

re3data.org
REGISTRY OF RESEARCH DATA REPOSITORIES

ICPSR | INTER-UNIVERSITY
CONSORTIUM FOR
POLITICAL AND
SOCIAL RESEARCH
A PARTNER IN
SOCIAL SCIENCE
RESEARCH

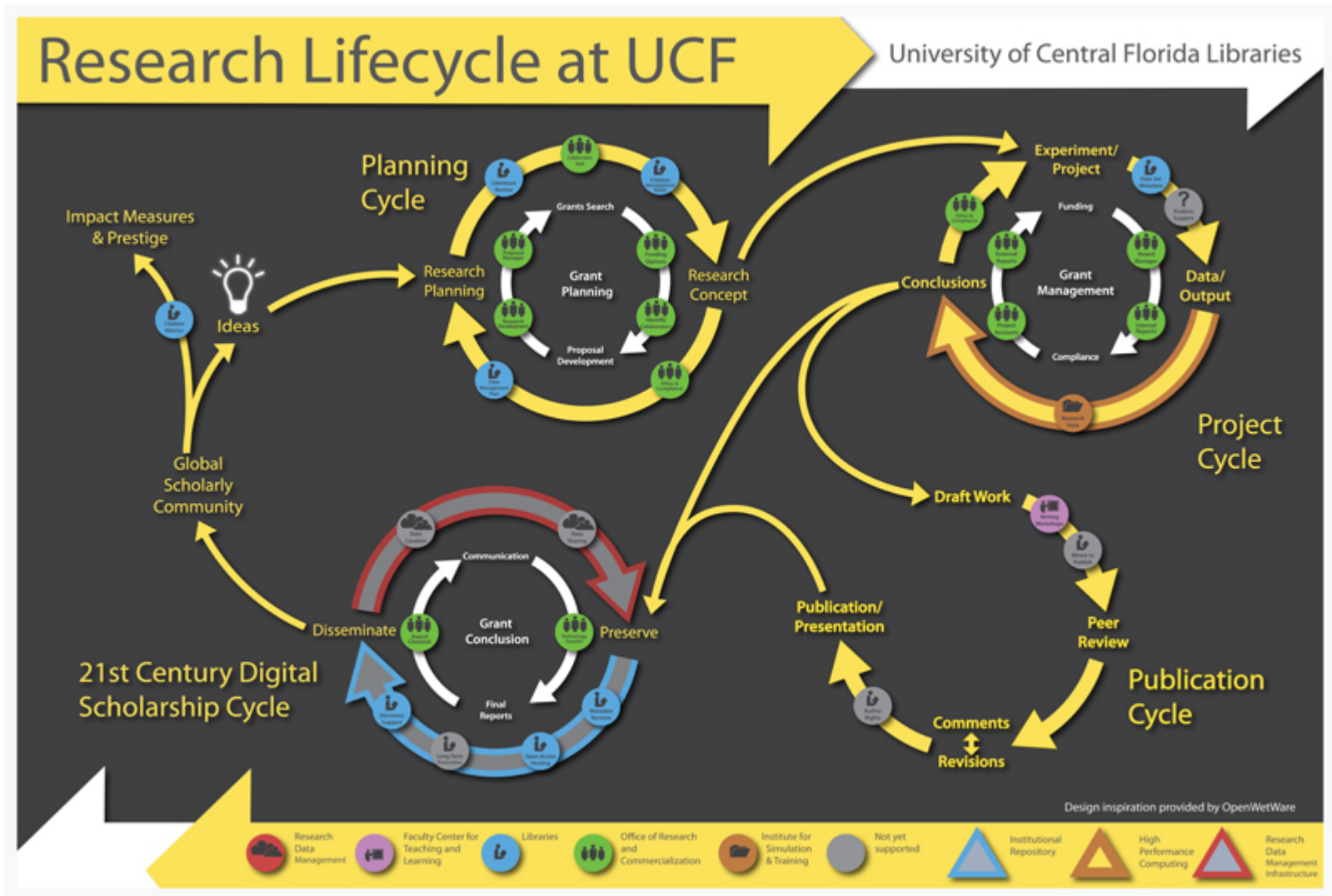
[Home](#) [Search](#) [Browse](#) [Suggest](#) [FAQ](#) [About](#) [Schema](#) [API](#) [Contact](#) [Imprint](#)

Knowledge BANK University Libraries and the Office of the Chief Information Officer

Knowledge
Bank
10th
Anniversary



<http://library.ucf.edu/ScholarlyCommunication/ResearchLifecycleUCF.php>





Amanda Rinehart

Rinehart.64@osu.edu

614-292-3336

Data Management Services Librarian

University Libraries